



21 Speed Full Suspension Long Range Folding Electric Bike 26 Inch With Double Battery

Our Product Introduction

for more products please visit us on electricbike-scooter.com

Basic Information

- Place of Origin: Zhejiang, China
- Brand Name: Thunder
- Certification: CE
- Model Number: TH103TD
- Price: \$639.00/pieces 1-19 pieces
- Packaging Details: long range electric bike export standard packing (Carton/Carton board/Foam/Foam bag)

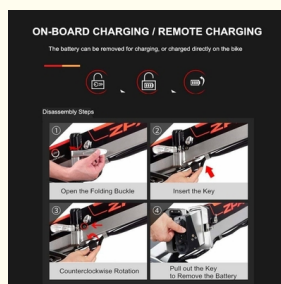
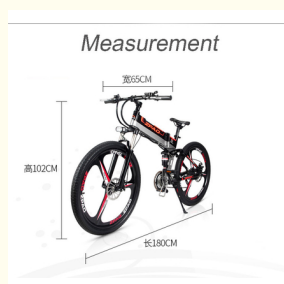
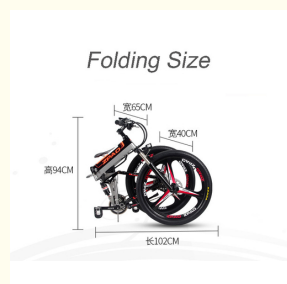


Product Specification

- Range Per Power: > 60 Km
- Frame Material: Aluminum Alloy
- Wheel Size: 26", 26 Inch
- Wattage: 351 - 500w
- Max Speed: 30-50Km/h, 40km/h
- Voltage: 48V
- Power Supply: Lithium Battery
- Product Name: Long Range Electric Bike
- Battery: Double 48V 10.4Ah Battery
- Brake: Double Disc Brake
- Color: Black, white
- Display: LCD Display
- Motor Power: 48V 250W/350W
- Frame: Aluminum Alloy
- Derailleur: Shimano 21 Speed



More Images



Product Description

21 Speed Full Suspension EBIke with Double Battery Foldable and Long Range 26 Inches



Quality Warranty	2 years	Tyre size	26"*1.95 tires
Color selection	Black/white	PAS	1:1 intelligent pedal assistant system
Battery	Double 48V10.4Ah Li-ion battery	Certificate	CE, RoHS
Motor power	48V 250W/350w optional	Controller	Small intelligent controller
Wheel	Magnesium alloy Integrated wheel	Frame	Alloy aluminium
Brake	Front/rear disc brake	Product name	Long range electric bike
Front fork	Suspension front fork with lock	Displayer	LCD screen
Derailleur	Shimano 21 speed-gears	Light	LED front and rear light

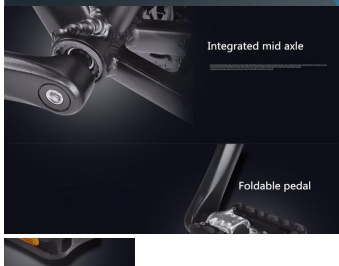
More Details For Electric bicycle

- 1.Max load: 125KGS
- 2.Max speed :40km/h(25 or 32km/h can be limited as per request)
- 3.Distance per charge:110-120km
- 4.N.W./G.W.:28 KGS/35KGS
- 5.Qty/container: 110pcs/20ft,270pcs/40HQ

Detailed Images



Bike Computer



MOTOR

QUIET

BRUSHLESS

HIGH SPEED



ADVANCED TECHNOLOGY

BIG BEARING CAPACITY

56.3_{N·M}

TORQUE

350_W

POWER

30°

MAX
CLIMBING

40_{KM}

MAX
SPEED

ON-BOARD CHARGING / REMOTE CHARGING

The battery can be removed for charging, or charged directly on the bike



Disassembly Steps



Open the Folding Buckle





Insert the Key



Counterclockwise Rotation



Pull out the Key
to Remove the Battery

 **Press**  Power Switch

UP Button

Speed

Cruise Control

ON/OFF

Headlight




5 Grade
Pedal Assist

Odometer

Down Button

Battery Capacity

Mode

-  UP button: Shift Assist level from low to high, long press to start headlight.
-  Power Switch: Long press to turn on/off the display, short press to switch the riding data.
-  Down button: Shift Assist level from high to low.

Note: When Assist is 1-5, it is assistant mode; when Assist is 0, can only pedal, the throttle and assistance is invalid.

SHIMANO



Folding Size



Measurement





Our Company



Huzhou thunder electric bike CO., LTD is a professional manufacturer for Electric Bikes, Electric Scooters and Electric Tricycles with 15 years experience in Zhejiang province of China, products have been approved by CE, UL, RoHS and ISO9001 certificates. We started exporting since 2009, customers are mainly from Europe, North America, South America and Oceania, and already cooperated with some big chain store, supermarket and webshop sales company.

Packing & Delivery



Foam bag packing



Carton packing



Container loading

Certification



Our Service

- 1.) 15 years experience in manufacturing, 8 years working for foreign customers!
- 2.) All the sales people are well-educated at college, they have good communication skills!
- 3.) OEM order and Customization services are always welcome!
- 4.) 24 hours online service! Any of the customer's inquiry will be replied at the first time when we receive them.

FAQ

FAQ:

1. Q: Can I get some samples?

A: Yes, sample order is always available for quality check and test.

2. Q: What's the lead time? What is your terms of delivery?

A: It usually takes about 25-40 days for production based on different quantity; Delivery available for EXW, FOB, CFR, CIF, DDU.

3. Q: What's your payment terms?

A: We usually accept Paypal,Credit Card,Bank Transfer or L/C,and other payment can also be negotiated.

4. Q: What's your warranty terms?

A: We offer 1-2 years for different products,please contact us for details.

5. Q: Do you have the products in stock?

A: Usually all ebikes will be newly produced upon order including samples.

6. Q: Can I mix different models in one container?

A: Yes, different models can be mixed up in one full container.

7. Q: How does your factory do regarding the quality control?

A: Quality is priority. We always attach great importance to quality control from the very beginning to the end of the production. Every product will be fully assembled and 100% tested before packing and shipping.

8. Q: What can you do regarding long-term cooperation?

A: 1. We could keep stable and consistent quality and reasonable price to ensure our customers benefit ;

2. We know how to do business with foreign customers and what we should do to make our customers happy.



Huzhou Thunder Electric Bike Co., Ltd.



+86-571-86103517



info@thunderebike.cn



electricbike-scooter.com

No.103 Hengtang Road,Yuyue Town,Deqing,Huzhou 313213,Zhejiang province,P.R.China