



60v 20ah Lithium Battery 1000W Fat Tyre Citycoco Electric Motorcycle for Range 35-75km

Our Product Introduction

Basic Information

- Place of Origin: Zhejiang, China
- Brand Name: OEM
- Certification: ce
- Model Number: XWZ-H004 electric motorcycle
- Minimum Order Quantity: 10 pieces
- Price: \$499.00/pieces 10-49 pieces
- Packaging Details: Steel structure+7 layers Corrugated carton
(1.) Packing: 1 Piece/1 Carton
(2.) Packing size: 1850x380x800mm
(3.) N.W./G.W.: 70/82KGS
(4.) Inner bubble bag wrap+foam, Outer 7 layers corrugated cartons
- Supply Ability: 5000 Piece/Pieces per Month MOQ of 1 piece



Product Specification

- Power: 1000W
- Voltage: 60V
- Charging Time: 6-8h
- Foldable: NO
- Range Per Charge: 40-60km
- Product Name: Electric Motorcycle
- Motor Power: 60V 1000W
- Color: White, Red, Black, Yellow, Brown, Blue
- Battery: 60V 12-15AH Battery
- Max Speed: 25km/h Or 35km/h
- Max Loading: 200kgs
- Range Per Charge: 35-75km Optional
- Charging Time: 4-5 Hours
- Brake: Hydraulic Disc Brake
- Packaging: Steel Structure+carton



More Images



Product Description

C2-1

LEAD-ACID

60V/12AH
CAPACITY

35-45Km
RANGE

60V/1500W
POWER



C2-2

LITHIUM

60V/12AH
CAPACITY

30-40Km
RANGE

60V/1500W
POWER



Our Product Introduction

for more products please visit us on electricbike-scooter.com

C2-3

LITHIUM

60V/15AH
CAPACITY

40-50Km
RANGE

60V/1500W
POWER



C2-4

LITHIUM

60V/18AH
CAPACITY

50-60Km
RANGE

60V/1500W
POWER



C2-5

LITHIUM

60V/20AH
CAPACITY

60-70Km
RANGE

60V/1500W
POWER



Product Description

Frame	high duty steel	Motor	60V 1000W
Battery	60V 12Ah lithium battery (15Ah,18Ah,20AHOPTIONAL)	Controller	60V intelligent controller
Max speed	25 or 35km/h	Range per charge	35-75 km
Charging time	4-5 hours	Headlight	LED light
Tires	18x9.5-8	Mudguards	Plastic
Front fork	Steel (suspension optional)	Brakes	Hydraulic disk brakes
Max loading	200 kgs	Climbing ability	25 degree
Packing size	185x38x80cm	Warranty	2 years

Features :

- 1.1000W high power motor
- 2.60V 12Ah lithium battery, 15ah,18ah,20ah optional.
- 3.Bluetooth and anti-theft alarm optional
- 4.Double seat and back rest,user-friendly electric scooter
5. 2 years warranty

NO TRAFFIC

TRIP MODE



FAREWELL TO TRAFFIC JAM



CHERRY BLOSSOM IN SPRING RELEASED TRIP



DO NOT SQUEEZE THE SUBURB: A VARIETY OF BEYONDITY



A WALK CHUANJIE LANE
EXPLORING THE NEW UNKNOWN OF THE CITY

FEATURES



Anti-theft



Suspension



Anti-slip



Hydraulic brake



Long range



High power



Lights



Seats

WITH ANTI-THEFT SYSTEM, LET YOU ALWAYS GRASP THE DYNAMICS OF THE CAR



REMOTE CONTROL

REMOTE CONTROL USE AND DISPLAY



ONE BUTTON START

F-SECURE MOBILE SECURITY

ANTI-VIOLENCE OPEN

REMOVABLE CHILD SEAT



DOUBLE LED

UP AND DOWN HEADLIGHTS ILLUMINATE THE FRONT RANGE WIDENIGHT DRIVING GUARDIAN





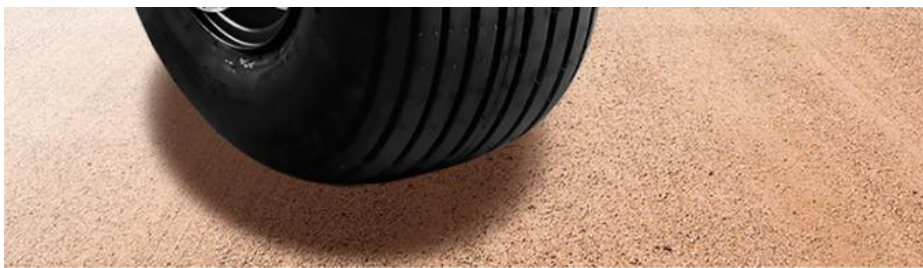
STORAGE BOX

SAFETY CAN BE PLACED BY ADDING CONVENIENCE CLOTHES AND OTHER SMALL PIECES



FAT WHEEL SAFER

VACUUM RUBBER TIRE HAS EXCELLENT SHOCK ABSORPTION
EFFECT STRONG GRIP AND MORE EFFECTIVE BRAKING



ALL TERRAIN

THE STRONG COCKROACH IS STRONGER THAN OTHERS



COMFORTABLE SUSPENSION FORK

THE FRONT AND REAR DAMPING SYSTEM MAKES YOUR
RIDING MORE COMFORTABLE





REAR SUSPENSION



SEAT SUSPENSION

TWO CHOICES

BATTERY

HIGH EFFICIENCY LONG LIFE AND LONG SERVICE LIFE

LITHIUM



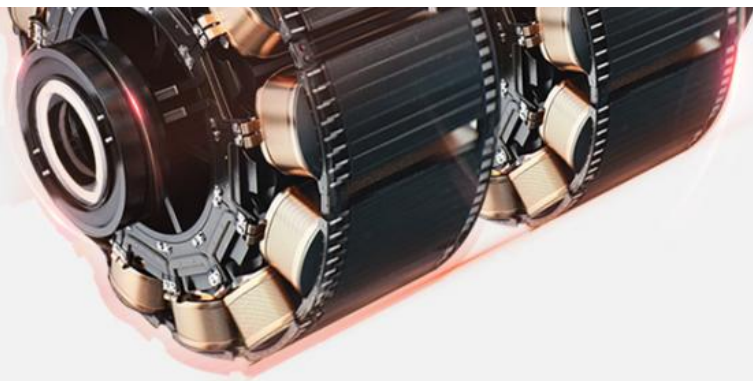
LEAD-ACID



POWER MOTOR

CLIMBING ANGLE, SPEED AND PASSION COEXIST





1500w



95_{n/m}



30°

COLOR OPTION

CHOOSE YOUR HORSE STYLE



1



2



3



4



5



6



7



8



9



10



11



12



13



14



15



16



17



18



19



20



21



22



23



24



25

HYDRAULIC BRAKE

CLIMBING ANGLE, SPEED AND PASSION COEXIST



FRONT

REAR

PARAMETERS AND SPECIFICATIONS



1756mm



DETAILS

LET THE WORLD'S PICKY CAR OWNERS

01

MEDIUM DESIGN OF ERGONOMIC PALMPRINT
FRICTION DOES NOT SLIP



02

USUAL ELECTRICITY DISPLAY STRUCTURE
HUMANIZATION, EASY TO UNDERSTAND

03

TWICE A RIDE WITH AN ADULT OR A CHILD
LIBERATE YOUR FEET



04

HUMANIZED DESIGN OF SPEEDING LIGHTS AND BRAKES
CAR LIGHTS LET YOU TRAVEL WITHOUT WORRIES

05

WHEN YOU ROLL THE MOMENT, CUT OFF THE POWER
LET YOUR DRIVING SAFETY



06

CLEARLY SEE THE BACK OF THE SITUATION
EFFECTIVE ACTION

07

FOR SAFE TRAVEL, TO PROTECT YOUR
SAFETY, WE PROPOSE IT



08

THERE IS MORE, TURN LIGHT, LIGHT WORK
CAN PROTECT YOU TO MAKE A DESIGN

SHOW
PRODUCT DISPLAY





Company Information

Thunder Electric Bike Co.,Ltd is a professional manufacturer for Electric Bikes,Electric Scooters and Electric Tricycles with 12 years experience in Zhejiang province of China,products have been approved by CE,UL,RoHS and ISO9001 certificates.We started exporting since 2009,customers are mainly from Europe, North America, South America and Oceania, and already cooperated with some big chain store, supermarket and webshop sales company.

Our Services

- 1.) 12 years experience in manufacturing,8 years working for foreign customers!
- 2.) All the sales people are well-educated at college,they have good communication skills!
- 3.) OEM order and Customization services are always welcome!
- 4.) 24 hours online service!Any of the customer's inquiry will be replied at the first time when we receive.

FAQ

1. Q: Can I get some samples?

A: Yes,sample order is always available for quality check and test.

2. Q: What's the lead time?What is your terms of delivery?

A: It usually takes about 25-40 days for production based on different quantity;Delivery available for EXW, FOB, CFR, CIF, DDU.

3. Q: What's your payment terms?

A: We usually accept Paypal,Credit Card,Bank Transfer or L/C,and other payment can also be negotiated.

4. Q: What's your warranty terms?

A: We offer 1-2 years for different products,please contact us for details.

5. Q: Do you have the products in stock?

A: Usually all ebikes will be newly produced upon order including samples.

6. Q: Can I mix different models in one container?

A: Yes, different models can be mixed up in one full container.

7. Q: How does your factory do regarding the quality control?

A: Quality is priority. We always attach great importance to quality control from the very beginning to the end of the production. Every product will be fully assembled and 100% tested before packing and shipping.

8. Q: What can you do regarding long-term cooperation?

- A: 1. We could keep stable and consistent quality and reasonable price to ensure our customers benefit ;
2. We know how to do business with foreign customers and what we should do to make our customers happy.

9.Q: How to contact us?

Contact name: Mr. Jupiter

Skype ID: jupiter_wt

Mobile number: +86 176 8169 3763

WhatsApp number:+86 186 5636 7330



Huzhou Thunder Electric Bike Co., Ltd.



+86-571-86103517



info@thunderebike.cn



electricbike-scooter.com

No.103 Hengtang Road,Yuyue Town,Deqing,Huzhou 313213,Zhejiang province,P.R.China